



Case study

Project brief:

To provide a complete multimodal transport solution for a 125MVA 10.5Kv (72548) Transformer and a 120 MVAr (72573) Reactor + Accessories

This particular project commenced from FOT Factory in Turkey and was, completed FOT to on Site in Tukums Latvia.

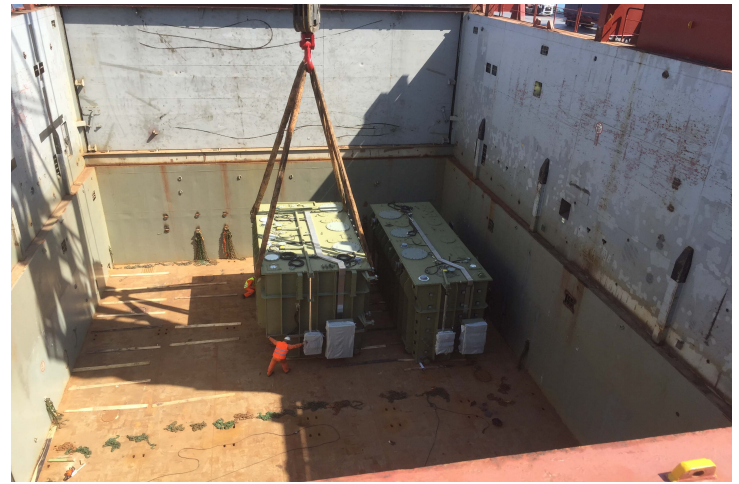
The ALS Project Manager carried out various site visits prior to the cargo movement.

Communication and coordination with the site throughout the transportation ensured a smooth transition to the final destination.

ALS took care of all risks and discussions with the ports and suppliers to minimize the involvement of our customer for the duration of the project.

ALS
Exceptionally committed

www.abnormal-loads.com



ALS Group Project Activity:

- Inland transport in Turkey from Factory to Port of Loading
- Vessel Charter from Turkey to Latvia
- Port handling in Latvia
- Inland transport from port of discharge to site in Latvia

Dimensions:-

Reactor = L: 8.7m x W: 3.25m x H 4.2m – 127,000kg

Transformer = L: 7.4m x W: 4.1m x H 4.45m – 110,000kg

ALS
Exceptionally committed

www.abnormal-loads.com